

Mostra Nuova 2.0

A MARK SIMONSON STUDIO FONT

USER GUIDE

Congratulations on purchasing a license to Mostra Nuova. This guide will help you get the most from your new font software. Mostra Nuova uses OpenType technology to provide endless stylistic options.

Alternate Characters. An abundance of alternate characters are available. These may be used four ways: Stylistic Sets, the Glyph palette, Adobe pop-ups, or by using a “Stylistic Alternates” button or menu item. Availability of these three methods depends on the application you are using. (TABLE A below lists common applications and the methods they provide. Check your application’s documentation for more information about working with alternate characters in OpenType fonts.)

Stylistic Sets. There are 20 Stylistic Sets in Mostra Nuova. In older apps, they appear as “Stylistic Set 1” through “Stylistic Set 20.” In newer apps, they will have names like “Alternate lowercase a.” The first four sets are composed of selected alternate characters that give Mostra Nuova four distinct looks. The rest can be used individually or in combinations to create your own looks. (See TABLE B for a complete listing of Stylistic Sets in Mostra Nuova and their effects. See the documentation of your application for instructions on using Stylistic Sets.)

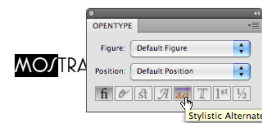
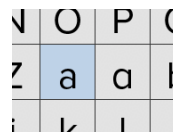
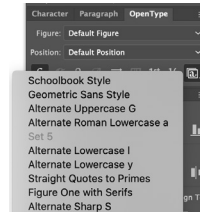
Glyph Palette. Most OpenType-savvy applications include a Glyph palette that provides access to every character in a font. This is a convenient way to insert a single alternate character into your text. (See your application’s manual for more info about using the Glyph palette.)

Adobe Pop-ups. Recent versions of Adobe CC have a handy pop-up that appears when you select one or more characters, showing any alternates or OpenType features that can be applied

Stylistic Alternates. Some apps also provide a button or menu item labeled “Stylistic Alternates.” This changes the selected character to an alternate form, if any. When there are multiple alternate forms, only the first one can be chosen with this method. Generally, this method is not very useful unless there is only one alternate for a character. See your application’s manual for more info.

Case-sensitive Forms. Certain characters, such as the hyphen, dashes, bullet and other punctuation, are aligned to the height of the lowercase by default. However, when you choose the all-caps style (instead of using the shift key or caps lock key), they will align on the caps instead.

MOSTRA mostra
MOSTRA mostra
MOSTRA mostra
MOSTRA mostra



¡X-ray! ¡X-RAY!

TABLE A	Stylistic Sets	Glyph Palette	Adobe Pop-ups	Stylistic Alternates
Adobe InDesign	CS2 and later	CS2 and later	CC 2018 and later	
Adobe Illustrator	CC 2018 and later	CS and later	CC 2018 and later	CS and later
Adobe Photoshop		CC 2018 and later	CC 2018 and later	CS and later
QuarkXPress	2016 and later	7.0 and later		
Microsoft Word	2010 and later			
Affinity Designer, Photo, Publisher	Yes	Yes		
Apple Pages, Keynote (macOS)	Yes			
Web	Via CSS in most web browsers			

Notes: Adobe After Effects will accept text containing alternate characters, via the clipboard, from Adobe Illustrator. Other applications support alternate characters to varying degrees. Consult your documentation for more information.

TABLE B	Style Name	Off (Default)	On (Set Applied)
Stylistic Set 1	Decorative Style	A E F G K Q R S Y Æ a e g i j k s æ œ	A E F G K Q R S Y Æ a e g i j k s æ œ
Stylistic Set 2	Elegant Style	A C D G Q S c s u	Λ C D G Q S c s u
Stylistic Set 3	Wedge Style	A E F Q i j	A E F Q i j
Stylistic Set 4	Plain Style	M Q S s	M Q S s
Stylistic Set 5	Narrow Splaid MW	M W	M W
Stylistic Set 6	Simple A	A	Λ
Stylistic Set 7	Narrow CGc	C D G c	C D G c
Stylistic Set 8	Kabel G	G	G
Stylistic Set 9	Lantern Jaw G	G	G
Stylistic Set 10	Simple Kk	K k	K k
Stylistic Set 11	Wide Splaid M	M	M
Stylistic Set 12	Stub R	R	R
Stylistic Set 13	Lazy Ss	S s	S s
Stylistic Set 14	Elegant Ss	S s	S s
Stylistic Set 15	Elegant Ss (Alternate)	S s	S s
Stylistic Set 16	Lazy Y	Y	Y
Stylistic Set 17	Two-story a	a æ œ	a æ œ
Stylistic Set 18	Lazy e	e æ œ œ	e œ œ œ
Stylistic Set 19	Two-story g	g	g
Stylistic Set 20	Cursive z	Z	3

Notes: Sets 1–4 provide selected “recipes” of alternate characters designed to give Mostra Nuova a specific look. The remaining sets can be combined (when software allows) to create your own custom recipes or used alone to change only a few characters (or even just one). Accented characters are not shown in this table, but are fully represented in the Stylistic Sets. Certain stylistic alternates have little or no effect in some weights (the alternate "K" in Heavy and Black, for example).

