

# *Kinescope*

A MARK SIMONSON STUDIO FONT

USER GUIDE

*Congratulations* on purchasing a license to Kinescope! This handy guide will help you get the most from your new font. Kinescope uses advanced OpenType technology to provide a level of control that is not possible with traditional script fonts. Here's how . . .

*Art Eraser* → *Art Eraser*

Look familiar? This is the way traditional script fonts are often designed. The shapes work well when set next to each other, but not so well when set alone or at the beginning or end of a word. This is because with a traditional font, there can only be one shape for each character. When a character falls at the end of a word, an unneeded (and unsightly) connecting stroke still remains. And some characters, like the s and r, seem incomplete when they fall at the beginning of a run of characters or stand alone.

*Art Eraser* → *Art Eraser*

With Kinescope, each character automatically takes into account what comes before or after and chooses from one of up to four possible shapes for the best aesthetic effect. This is true for all characters, not just connecting ones.

*“Nacho”* → *“Nacho”*

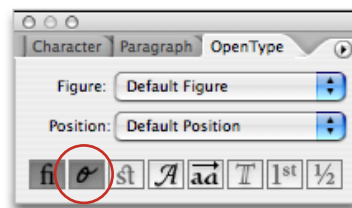
Notice how the stroke at the top of the N vanishes, making room for the quote mark. There are several ways to control this manually. See the next page for details.

*Sandy's* → *Sandy's*

This is where many traditional script fonts fall apart—literally. Kinescope automatically fixes apostrophe-s combinations.

# How to get the most from Kinescope

Kinescope does most of its magic using an OpenType feature called **Contextual Alternates**. Programs such as Adobe InDesign and QuarkXPress (7.0 or later) support this feature automatically. In other programs, such as Adobe Illustrator CS1 and later and Mellel (Mac OS only), the feature may be “off” by default. In such a case, you simply need to switch it “on” using the OpenType palette or menu in the program.



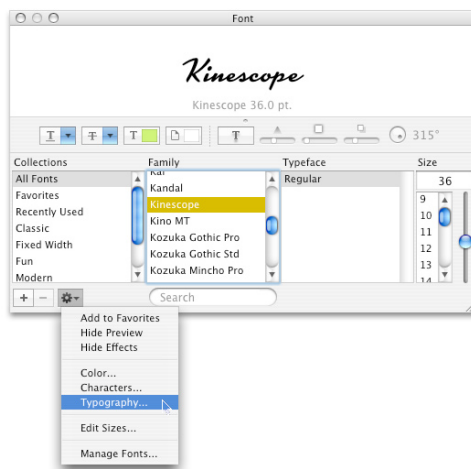
If the character that Kinescope automatically chooses is not the one you want, you can either turn off Contextual Alternates for that character, or choose a different character from the Glyph palette.

**Bug Alert:** Please note that the Mac version of Photoshop (CS1 and CS2) is supposed to support this feature, but because of a bug in the program, it doesn't always work correctly and “Contextual Alternates” may be dimmed and unselectable in the OpenType menu. As a work-around, you can set your text in Illustrator or InDesign, convert it to outlines, and then copy and paste into Photoshop. This bug has been fixed in the Mac version of Photoshop CS3. (Windows versions of Photoshop, CS1 or later, also work correctly.)

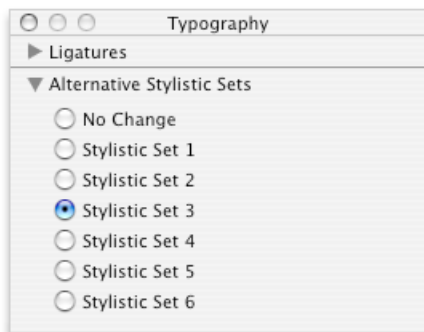
Support for Contextual Alternates in other programs is limited at the time of this writing (Spring 2007). Hopefully, this situation will improve soon. In the mean time, you can set your text in Illustrator or InDesign, convert it to outlines, and then copy and paste into your program as a graphic image.

## A Work-Around for Some Mac Applications that Don't Support Contextual Alternates

If you are working on MacOS X (10.4 or later), and you are using an application that supports the Font panel (shown at right) such as Pages, Keynote, or other “Cocoa” applications, you can use **Stylistic Sets** to manually select alternate characters. Choose “Typography” from the pop-up menu at the lower left corner of the panel (the one with the little gear icon).



Select a character in your text (set in Kinescope), and then choose one of the Stylistic Sets from the Typography palette (shown below).



The sets have the following effects in Kinescope:

- SS2 = Use beginning form (r and s only).
- SS3 = Use ending form if it exists.
- SS4 = Use stand-alone form (r and s only).
- SS5 = Use capitals without lefthand stroke.
- SS6 = Use ending form of capitals without lefthand stroke (M, N, and U only).

## Other Kinescope Features

**Alternate Capital I and J.** If you would prefer either of these characters without the lefthand stroke, you can access these either from the Glyph palette or using Stylistic Alternates or Stylistic Set 1. For example:

Indiana → Indiana

**Extended Language Support.** Kinescope has support for the following languages: English, French, Spanish, Portuguese, Basque, German, Swedish, Norwegian, Danish, Finnish, Icelandic, Czech, Polish, Hungarian, Lithuanian, Croatian, Esperanto, Maltese, Turkish, Romanian, and Albanian.

**Automatic Fractions.** If you type numbers + forward slash + numbers, and choose “Fractions” from your OpenType palette or menu, a properly formatted fraction will result. For example:

44/100 →  $\frac{44}{100}$

---

## Other Tips

As a script typeface, it is not recommended that you set Kinescope in all caps. However, there are times when this is unavoidable. In such cases, Kinescope will use Contextual Alternates to make the best of the situation. For example:

Jaguar XKE → Jaguar XKE

You should normally avoid using other than the default spacing for Kinescope. In other words, don't set it looser or tighter. Otherwise, this happens:

Too Tight ... Too Loose

However, if you want a spaced out look, try typing spaces between the letters (and tripple spaces between words). This forces the nonconnecting forms of the characters to be used. Once typed this way, you can adjust the spacing to your taste. For example:

## Special Situations

It's an interesting and unusual look that may be perfect for that special project.

# The Complete Character Set

Aaai BBbb CCcc DDdd EEee FFffi ffl Ggg Hhh Iii  
Iijj Kkkk LLll MMMm Mmm Nnn Ooo  
Ppp Qqq Rrrrr r Ssss s ßß Ttt UUUu Uuu Vvv  
Www Xxx Yyy Zzz Ááá Ààà Âââ Ãää Äää  
Ååå Ăăă Āāā Aaa Ąąą Ććć Ċċċ Đđđ  
Ðđđ Ééé Èèè Êêê Ëëë Ěěě Ēēē Ęęę  
Ěěě Ńńń Ğğğ Ğğğ Ğğğ Ğğğ Hhht HhHh Iú Iù Iû  
Iü Iū Iū Iu Ii Iĩ Iı Iıı Kkkk kkk LLll LLll  
LLll LLll LLll Ńńń Ńń Ńńń Ńń Ńńń Ńń Ńń Ńń  
Ńń Ńń Ńń Ńń Óó Óó Óó Öö Öö Öö Öö Öö Öö Öö  
Öö Ććć Ććć Ććć Ććć Ććć Ććć Ććć Ććć Ććć  
Śśś Śśś Śśś Śśś Śśś Śśś Śśś Śśś Śśś Śśś Śśś  
Śśś Śśś Śśś Śśś Śśś Śśś Śśś Śśś Śśś Śśś Śśś  
Uu Uu Uu Uu Uu Uu Uu Uu Uu Uu Uu Uu Uu Uu  
Uu Uu Uu Uu Uu Uu Uu Uu Uu Uu Uu Uu Uu Uu  
Uu Uu Uu Uu Uu Uu Uu Uu Uu Uu Uu Uu Uu Uu  
Ww Ww Ww Yyy Yyy Yyy Zzz Zzz Zzz Đđđ Đđđ Đđđ

[1234567890] (@#\$%&'()\*+,-./:;<=>?@A B C D E F G H I J K L M N O P Q R S T U V W X Y Z [ \ ] ^ \_ ` a b c d e f g h i j k l m n o p q r s t u v w x y z { | } ~ ¡ ¢ £ ¤ ¥ ¦ § ¨ © ª « ¬ ® ¯ ° ± ² ³ ´ µ ¶ · ¸ ¹ º » ¼ ½ ¾ ¿