



*The  
Bookmania  
Cookbook*



TASTY SWASH RECIPES  
FOR YOUR TYPOGRAPHIC PALATE

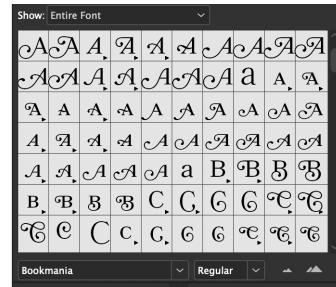
# APPETIZERS

THIS “COOKBOOK” will tell you how Stylistic Sets and other features work in Bookmania, giving you complete access to its crazy cornucopia of characters. Let’s get cooking!

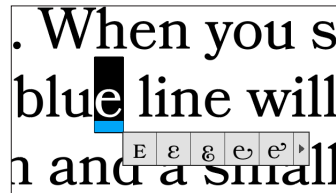
BOOKMANIA CONTAINS 685 swash, alternate, and ligatured characters. If you include accented characters, the total comes to 2,505! How in the world, you might ask, could you possibly utilize them? Unfortunately, you can’t type them directly from you keyboard. But there are ways.

Sadly, you can’t access swashes or alternate characters in all apps. Most design, graphics, and word processing apps do allow it, but animation, video, spreadsheet, and presentation apps often don’t. You can work around this problem by inserting an image created in a graphics app such as Photoshop or Illustrator.

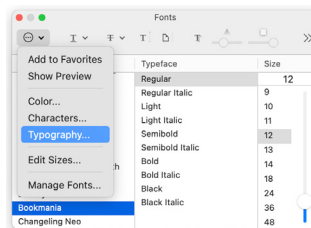
THE SIMPLEST is with a *glyph palette*, which is available in some apps, such as Adobe InDesign, Photoshop, and Illustrator. With a glyph palette, all characters in a font are displayed in a table. To insert one into your text, just double-click it.



ADOBE APPS also have a special feature for using alternate characters. If you select one or more characters, a blue line will appear along the bottom of the selection and a small pop-up menu containing a table of alternate characters or a list of OpenType features will appear, if any exist. This is in some ways even simpler than the glyph palette, but may not show all possibilities. Clicking on the little arrow takes you to a full selection in the glyph palette.



IF YOUR APP does not have these features, you may be able to use *Stylistic Sets*. When applied to characters, these select different character variations. Some access to Stylistic Sets can be found in Microsoft Word under Format > Font > Advanced. In Apple Pages and TextEdit, choosing Typography from the Font panel will give you full access to Stylistic Sets, a mini glyph palette, and access other Bookmania features.



# À LA CARTE

**M**OST MODERN WEB BROWSERS have very good support for the OpenType features in Bookmania. It can be used as a webfont through a service like Adobe Fonts (formerly Typekit) or by purchasing a webfont license and hosting fonts on your own web server. To use alternate and swash characters, you add CSS font-feature-settings attributes to your HTML mark up and/or CSS definitions.

**Y**OU CAN APPLY one or more attributes to a style sheet. For example, let's say you wish to use the "Jenson e" (ss01) and the "Cursive Forms" (ss04) in all italics (activated with the em tag). Define the em tag in your CSS file like this (attributes are highlighted in color):

```
em { font-feature-settings: 'ss01', 'ss04'; }
```

This will produce the following effect whenever the em tag is used:

*The quick brown fox jumps over the lazy dog.*

**O**R, YOU CAN APPLY one or more attributes to individual characters with the span tag to get specific alternate or swash characters. In the following example, the "B" and "k" in the name "Bookmania" are substituted with swash variants:

```
<span style="font-feature-settings: 'ss10' ">B</span>oo<span style="font-feature-settings: 'ss17', 'ss20' ">k</span>mania
```

This gets you the following effect:

**Bookmania**

ss10, ss17, and ss20 are Stylistic Sets that control various swash forms. A complete list is shown on the **Pantry** page. A complete list of "recipes" to get different swashes is shown in the **Recipes** section.

# KNOW YOUR INGREDIENTS

**S**WASHES ARE LIKE SPICES—a little goes a long way. It can be tempting to use them at every opportunity, but you don't need to go overboard. One to three is often plenty.

*Cheesecake*  
*Aperatif*

Some swash characters, like these initial W's, are designed to fit next to caps or lowercase ascenders, while others are designed to fit next to lowercase letters or small caps.

*WHISKEY*  
*Whiskey*  
*WHISKEY*  
*Water*

Complex swash characters can be built up by applying multiple Stylistic Sets to a character. For example, start with a basic K, add “Top Left Swash, Straight (ss10)”, “Bottom Right Swash, Short (ss17)”, and “Top Right Swash, Short (ss19)” to get these variations:

*Ketchup*  
*Ketchup*  
*Ketchup*  
*Ketchup*

Some swashes can be used just about anywhere in a word, but others work best—or even exclusively—at the start, middle or end of a word. Lowercase swash characters are mostly designed to work in the middle or end of a word, but some can work at the start.

*DINNER*  
*supper*

You can combine other OpenType features with swashes to get more effects. Stylistic Sets can be added to Discretionary Ligatures and Standard Ligatures to get swash variants. For instance, the first one takes “st”, applies Discretionary Ligatures to get “sṭ”, and then adds “Bottom Left Swash, Medium (ss14)” to get the swash variation. The “ZA” in PIZZA only needs Discretionary Ligatures to be applied. Since Standard Ligatures are on by default, the “ffl” in “Waffles” is achieved by adding three Stylistic Sets, ss14, ss15, and ss16. (This might seem weird, but it works.)

*Mustard*  
*LAMB*  
*Waffles*

There are also forms of C and L which wrap around lowercase or small caps.

*CONDIMENT*  
*Lettuce*

# SERVING SUGGESTIONS

Quiche

Q

- + Miscellaneous Alternates (ss07)
- + Bottom Right Swash, Long (ss18)

h

- + Bottom Left Swash, Medium (ss14)

e

- + Top Right Swash, Long (ss20)

JAMBALAYA

J

- + Top Left Swash, Straight (ss10)
- + Bottom Left Swash, Long (ss16)

M

- + Middle Swash, Curled (ss12)

A

- + Bottom Left Swash, Medium (ss14)

LA

- + Discretionary Ligatures (dlig)

Y

- + Top Right Swash, Long (ss20)

A

- + Bottom Left Swash, Medium (ss14)

Chicken

Chi

- + Contextual Alternates (calt)
- + Discretionary Ligatures (dlig)

k

- + Bottom Right Swash, Short (ss17)

n

- + Bottom Right Swash, Short (ss17)
- + Bottom Right Swash, Long (ss18)

## SERVING SUGGESTIONS

# Flaming Moe

F

+ Top Left Swash, Curved (ss11)

m

+ Bottom Right Swash, Short (ss17)

g

+ Top Right Swash, Long (ss20)

M

+ Top Left Swash, Curved (ss11)  
+ Middle Swash, Curled (ss12)

e

+ Bottom Right Swash, Long (ss18)

# Huevos

H

+ Top Left Swash, Straight (ss10)  
+ Bottom Left Swash, Medium (ss14)  
+ Top Right Swash, Short (ss19)

v

+ Top Right Swash, Long (ss20)

s

+ Bottom Left Swash, Long (ss16)

# NEW YORK STRIP

N

+ Top Left Swash, Curved (ss11)  
+ Top Right Swash, Short (ss19)

Y

+ Top Left Swash, Straight (ss10)  
+ Bottom Left Swash, Long (ss16)  
+ Top Right Swash, Short (ss19)

r

+ Small Caps  
+ Bottom Right Swash, Short (ss17)

S

+ Bottom Left Swash, Long (ss16)  
+ Top Right Swash, Short (ss19)

t

+ Small Caps  
+ Top Left Swash, Curved (ss11)

r

+ Small Caps  
+ Bottom Right Swash, Short (ss17)

# SERVING SUGGESTIONS

Savoy Truffle

S

- + Miscellaneous Alternates (ss07)
- + Bottom Left Swash, Long (ss16)

v

- + Top Right Swash, Long (ss20)

y

- + Middle Swash, Curled (ss12)

T

- + Top Left Swash, Curved (ss11)
- + Top Right Swash, Short (ss19)

ffl

- + Bottom Left Swash, Medium (ss14)
- + Bottom Left Swash, Short (ss15)
- + Bottom Left Swash, Long (ss16)

e

- + Top Right Swash, Short (ss19)

CAFÉ LATTE

C

- + Wrapping Cap (ss09)

afé

- + Small Caps
- + Wavy Crossbar (ss06)

L

- + Wrapping Cap (ss09)

a

- + Small Caps
- + Wavy Crossbar (ss06)

tt

- + Small Caps
- + Discretionary Ligatures (dlig)

é

- + Small Caps
- + Wavy Crossbar (ss06)

Ambrosia

A

- + Curved A (ss08)
- + Middle Swash, Curved (ss12)
- + Bottom Left Swash, Medium (ss14)

b

- + Top Left Swash, Curved (ss11)

r

- + Top Right Swash, Short (ss19)

a

- + Middle Swash, Curled (ss12)

## SERVING SUGGESTIONS

# LASAGNE

LA

- + Discretionary Ligatures (dlig)
- + Top Left Swash, Straight (ss10)

G

- + Bottom Left Swash, Long (ss16)

E

- + Bottom Right Swash, Long (ss18)

# Deviled Eggs

D

- + Top Left Swash, Straight (ss10)
- + Bottom Left Swash, Long (ss16)

e

- + Jenson e (ss04)
- + Middle Swash, Curled (ss12)

E

- + Miscellaneous Alternates (ss07)
- + Top Left Swash, Straight (ss10)

g

- + Cursive Lowercase Forms (ss01)

S

- + Top Right Swash, Long (ss20)

# Lutefisk

L

- + Wrapping Cap (ss09)
- + Top Left Swash, Straight (ss10)

fi

- + Bottom Left Swash, Medium (ss14)
- + Bottom Left Swash, Long (ss15)

k

- + Bottom Right Swash, Short (ss17)
- + Top Right Swash, Long (ss19)



## SERVING SUGGESTIONS

# Avocado

A

- + Top Left Swash, Curved (ss11)
- + Top Right Swash, Short (ss19)

v

- + Top Right Swash, Long (ss20)

o

- + Middle Swash, Curled (ss12)

d

- + Top Left Swash, Curved (ss11)

o

- + Top Right Swash, Short (ss19)

# PIZZA

P

- + Top Left Swash, Straight (ss10)
- + Bottom Left Swash, Medium (ss14)

ZA

- + Discretionary Ligatures (dlig)

# APPLE FRITTER

A

- + Curved A (ss08)
- + Middle Swash, Curled (ss12)

e

- + Small Caps
- + Bottom Right Swash, Long (ss18)

F

- + Top Left Swash, Straight (ss10)
- + Bottom Left Swash, Medium (ss14)

r

- + Small Caps
- + Bottom Right Swash, Short (ss17)

r

- + Small Caps
- + Bottom Right Swash, Short (ss17)
- + Bottom Right Swash, Long (ss18)

# PANTRY

These 20 Stylistic Sets, in isolation or combined with each other and other features (Ligatures, Discretionary Ligatures, Small Caps, Contextual Alternates, and Figure Styles), are the ingredients to make all 2,505 swashes, alternate glyphs, and ligatures. In some apps, the name of the Stylistic Set will appear instead of the set number (shown at top). The code name (e.g., ss01) is used in CSS code. Since there are only 20 possible sets, the names don't always fit the results precisely.

Set 1 (ss01)		Set 2 (ss02)		
<i>a</i>	→	<i>a</i>		
Cursive Lowercase Forms		<i>Q</i>	→	<i>Q</i>
		Swap Roman & Italic Forms		

Set 3 (ss03)		
<i>A</i>	→	<i>a</i>
Commoncase Caps		

Set 4 (ss04)		
<i>e</i>	→	<i>e</i>
Jenson e		

Set 5 (ss05)		
<i>1</i>	→	<i>I</i>
Traditional Old Style Figure 1		

Set 6 (ss06)		
<i>A</i>	→	<i>A</i>
Wavy Crossbar		

Set 7 (ss07)		
<i>A</i>	→	<i>A</i>
Miscellaneous Alternates		

Set 8 (ss08)		
<i>A</i>	→	<i>A</i>
Curved A		

Set 9 (ss09)		
<i>Co</i>	→	<i>Co</i>
Wrapping Cap		

Set 10 (ss10)		
<i>A</i>	→	<i>A</i>
Top Left Swash, Straight		

Set 11 (ss11)		
<i>A</i>	→	<i>A</i>
Top Left Swash, Curved		

Set 12 (ss12)		
<i>A</i>	→	<i>A</i>
Middle Swash, Curled		

Set 13 (ss13)		
<i>A</i>	→	<i>A</i>
Middle Swash, Wavy		

Set 14 (ss14)		
<i>A</i>	→	<i>A</i>
Bottom Left Swash, Medium		

Set 15 (ss15)		
<i>A</i>	→	<i>A</i>
Bottom Left Swash, Short		

Set 16 (ss16)		
<i>A</i>	→	<i>A</i>
Bottom Left Swash, Long		

Set 17 (ss17)		
<i>K</i>	→	<i>K</i>
Bottom Right Swash, Short		

Set 18 (ss18)		
<i>K</i>	→	<i>K</i>
Bottom Right Swash, Long		

Set 19 (ss19)		
<i>K</i>	→	<i>K</i>
Top Right Swash, Short		

Set 20 (ss20)		
<i>K</i>	→	<i>K</i>
Top Right Swash, Long		

(dlig)		
<i>st</i>	→	<i>st</i>
Discretionary Ligatures		

(calt)*		
<i>Chi</i>	→	<i>Chi</i>
Contextual Alternates*		

\* Ligatures and Contextual Alternates are on by default, but get turned off in InDesign sometimes when using the Glyphs palette. Check if it's not working.

# RECIPES

The numbers in these “recipes” indicate stylistic set numbers. So, “08” means “Stylistic Set 8” or “ss08”. Names for sets are shown on the “Pantry” page.

Each swash character may be produced by starting with the base character (e.g., “A”) and applying stylistic sets or other features as indicated (e.g., “ss12” followed by “ss14”).

Italic swashes are shown here, but roman swashes are generally the same.

Shaded characters indicate that any character may be used in that position.

Most of these will also work with accented characters when appropriate.

## CAPITALS

$$\mathcal{A} = A + 10$$

$$\mathcal{A} = A + 11$$

$$\mathcal{A} = A + 12$$

$$\mathcal{A} = A + 13$$

$$A = A + 06$$

$$A = A + 14$$

$$A = A + 12 + 14$$

$$\mathcal{A} = A + 10 + 14$$

$$A = A + 15$$

$$\mathcal{A} = A + 16$$

$$\mathcal{A} = A + 11 + 16$$

$$A = A + 07$$

$$\mathcal{A} = A + 07 + 10$$

$$\mathcal{A} = A + 07 + 12$$

$$\mathcal{A} = A + 07 + 13$$

$$\mathcal{A} = A + 07 + 14$$

$$\mathcal{A} = A + 07 + 16$$

$$\mathcal{A} = A + 07 + 10 + 14$$

$$\mathcal{A} = A + 07 + 10 + 16$$

$$\mathcal{A} = A + 07 + 12 + 14$$

$$\mathcal{A} = A + 07 + 12 + 16$$

$$A = A + 08$$

$$A = A + 08 + 12$$

$$A = A + 08 + 14$$

$$\mathcal{A} = A + 08 + 12 + 14$$

$$A = A + 08 + 16$$

$$\mathcal{A} = \mathcal{A} + 10$$

$$\mathcal{A} = \mathcal{A} + 14$$

$$\mathcal{A} = \mathcal{A} + 16$$

$$\mathcal{A} = \mathcal{A} + 10 + 16$$

$$B = B + 10$$

$$B = B + 16$$

$$B = B + 10 + 16$$

$$C = C + 17$$

$$C = C + 18$$

$$C = C + 17 + 18$$

$$C = C + 12$$

$$C = C + 10$$

$$C = C + 10 + 17$$

$$C = C + 10 + 17 + 18$$

$$C = C_x + 09$$

$$\mathcal{H} = Ch + dlig$$

$$\mathcal{H} = Chi + dlig + calt$$

$$D = D + 10$$

$$D = D + 16$$

$$D = D + 10 + 16$$

$$D = D + 11$$

$$E = E + 10$$

$$E = E + 17$$

$$E = E + 18$$

$$E = E + 07$$

$$E = E + 07 + 17$$

$$E = E + 07 + 18$$

$$E = E + 07 + 10$$

$$N = N + 10$$

$$N = N + 03$$

$$N = N + 03 + 10$$

$$F = F + 10$$

$$F = F + 14$$

$$F = F + 10 + 14$$

$$F = F + 11$$

$$F = F + 11 + 19$$

$$G = G + 16$$

$$G = G + 10$$

$$G = G + 10 + 16$$

$$H = H + 10$$

# RECIPES

$\mathcal{H} = H + 10 + 14$	$\mathcal{K} = K + 17 + 18 + 19$	$\mathcal{M} = M + 10 + 16$
$\mathcal{H} = H + 10 + 15$	$\mathcal{KA} = KA + \text{dlig}$	$\mathcal{M} = M + 12$
$\mathcal{H} = H + 10 + 14 + 19$	$\mathcal{KA} = KA + \text{dlig} + 10$	$\mathcal{M} = M + 10 + 12$
$\mathcal{H} = H + 10 + 15 + 19$	$\mathcal{L} = L + 10$	$\mathcal{M} = M + 12 + 15$
$\mathcal{H} = H + 10 + 14 + 20$	$\mathcal{L} = L + 17$	$\mathcal{M} = M + 10 + 12 + 15$
$\mathcal{H} = H + 10 + 15 + 20$	$\mathcal{L} = L + 18$	$\mathcal{M} = M + 10 + 12 + 14$
$\mathcal{I} = I + 10$	$\mathcal{L} = L + 10 + 18$	$\mathcal{M} = M + 11 + 12$
$\mathcal{J} = J + 10$	$\mathcal{L} = L + 17 + 18$	$\mathcal{M} = M + 10 + 12 + 16$
$\mathcal{J} = J + 10 + 16$	$\mathcal{L} = L + 07$	$\mathcal{M} = M + 07$
$\mathcal{K} = K + 10$	$\mathcal{L} = L + 07 + 17$	$\mathcal{M} = M + 03$
$\mathcal{K} = K + 17$	$\mathcal{L} = L + 07 + 18$	$\mathcal{M} = M + 03 + 18$
$\mathcal{K} = K + 10 + 17$	$\mathcal{L} = L + 07 + 17 + 18$	$\mathcal{M} = M + 03 + 10$
$\mathcal{K} = K + 18$	$\mathcal{L} = L + 07 + 10$	$\mathcal{M} = M + 03 + 10 + 18$
$\mathcal{K} = K + 17 + 18$	$\mathcal{L} = L + 07 + 10 + 17$	$\mathcal{N} = N + 10$
$\mathcal{K} = K + 20$	$\mathcal{L} = L + 07 + 10 + 18$	$\mathcal{N} = N + 10 + 14$
$\mathcal{K} = K + 10 + 20$	$\mathcal{L} = L + 07 + 10 + 17 + 18$	$\mathcal{N} = N + 10 + 19$
$\mathcal{K} = K + 17 + 20$	$\mathcal{LA} = LA + \text{dlig}$	$\mathcal{N} = N + 10 + 14 + 19$
$\mathcal{K} = K + 10 + 17 + 20$	$\mathcal{LA} = LA + \text{dlig} + 10$	$\mathcal{N} = N + 10 + 14 + 20$
$\mathcal{K} = K + 18 + 20$	$\mathcal{LX} = Lx + 09$	$\mathcal{N} = N + 11$
$\mathcal{K} = K + 17 + 18 + 20$	$\mathcal{LX} = Lx + 09 + 10$	$\mathcal{N} = N + 19$
$\mathcal{K} = K + 19$	$\mathcal{M} = M + 10$	$\mathcal{N} = N + 20$
$\mathcal{K} = K + 10 + 19$	$\mathcal{M} = M + 15$	$\mathcal{N} = N + 19 + 20$
$\mathcal{K} = K + 17 + 19$	$\mathcal{M} = M + 10 + 15$	$\mathcal{N} = N + 18$
$\mathcal{K} = K + 10 + 17 + 19$	$\mathcal{M} = M + 10 + 14$	$\mathcal{N} = N + 10 + 18$
$\mathcal{K} = K + 18 + 19$	$\mathcal{M} = M + 11$	$\mathcal{N} = N + 11 + 19$

# RECIPES

$N = N + 03$	$\mathcal{S} = S + 07 + 16$	$\mathcal{U} = U + 10 + 19$
$\mathcal{N} = N + 03 + 18$	$\mathcal{B} = B + 14$	$\mathcal{U}^{\circ} = U + 10 + 19 + 20$
$\mathcal{N} = N + 03 + 10$	$\mathcal{B} = B + 16$	$\mathcal{V} = V + 10$
$\mathcal{N} = N + 03 + 10 + 18$	$\mathcal{B} = B + 07$	$\mathcal{V} = V + 20$
$\mathcal{O} = \mathcal{O} + \text{dlig}$	$\mathcal{B} = B + 07 + 14$	$\mathcal{V} = V + 19$
$\mathcal{O} = O + 12$	$\mathcal{B} = B + 07 + 16$	$\mathcal{V} = V + 10 + 20$
$\mathcal{O} = O + 19$	$\mathcal{T} = T + 11$	$\mathcal{V} = V + 10 + 19$
$\mathcal{E} = \mathcal{E} + 12$	$\mathcal{T} = T + 11 + 19$	$\mathcal{V}^{\circ} = V + 19 + 20$
$\mathcal{P} = \mathcal{P} + 10$	$\mathcal{T} = T + 11 + 20$	$\mathcal{V}^{\circ} = V + 12$
$\mathcal{P} = P + 10 + 14$	$\mathcal{T} = T + 10$	$\mathcal{V} = V + 07$
$\mathcal{Q} = \mathcal{Q} + 02$	$\mathcal{T} = T + 11 + 13$	$\mathcal{V} = V + 07 + 10$
$\mathcal{Q} = \mathcal{Q} + 07$	$\mathcal{J} = T + 11 + 14$	$\mathcal{V} = V + 07 + 19$
$\mathcal{Q} = \mathcal{Q} + 07 + 17$	$\mathcal{J} = T + 11 + 14 + 19$	$\mathcal{V}^{\circ} = V + 07 + 20$
$\mathcal{Q} = \mathcal{Q} + 07 + 18$	$\mathcal{H} = Th + \text{dlig}$	$\mathcal{W} = W + 10$
$\mathcal{R} = R + 10$	$\mathcal{H} = Thi + \text{dlig} + \text{calt}$	$\mathcal{W} = W + 20$
$\mathcal{R} = R + 10 + 17$	$\mathcal{H} = Th + \text{dlig} + 16$	$\mathcal{W} = W + 19$
$\mathcal{R} = R + 17$	$\mathcal{H} = Th + \text{dlig} + 11$	$\mathcal{W} = W + 10 + 20$
$\mathcal{R} = R + 18$	$\mathcal{H} = Th + \text{dlig} + 11 + 14$	$\mathcal{W} = W + 10 + 19$
$\mathcal{R} = R + 17 + 18$	$\mathcal{T} = TT + \text{dlig}$	$\mathcal{W}^{\circ} = W + 19 + 20$
$\mathcal{R} = RA + \text{dlig}$	$\mathcal{U} = U + 12$	$\mathcal{W}^{\circ} = W + 12$
$\mathcal{R} = RA + \text{dlig} + 10$	$\mathcal{U} = U + 19$	$\mathcal{W} = W + 07$
$\mathcal{S} = S + 16$	$\mathcal{U}^{\circ} = U + 20$	$\mathcal{W} = W + 07 + 10$
$\mathcal{S} = S + 16 + 19$	$\mathcal{U}^{\circ} = U + 19 + 20$	$\mathcal{W} = W + 07 + 19$
$\mathcal{S} = S + 10$	$\mathcal{U} = U + 10$	$\mathcal{W}^{\circ} = W + 07 + 20$
$\mathcal{S} = S + 07$	$\mathcal{U} = U + 10 + 12$	$\mathcal{X} = X + 10$

# RECIPES

$X = X + 20$   
 $X = X + 14$   
 $\mathcal{X} = X + 10 + 20$   
 $\mathcal{X} = X + 10 + 14$   
 $X = X + 19$   
 $\mathcal{X} = X + 16$   
 $\mathcal{X} = X + 16 + 20$   
 $\mathcal{X} = X + 14 + 20$   
 $\mathcal{X} = X + 10 + 19$   
 $\mathcal{X} = X + 10 + 16$   
 $\mathcal{X} = X + 10 + 16 + 19$   
 $\mathcal{X} = X + 10 + 16 + 20$   
 $\mathcal{X} = X + 14 + 19$   
 $\mathcal{X} = X + 17$   
 $\mathcal{X} = X + 10 + 17$   
 $\mathcal{X} = X + 18$   
 $\mathcal{X} = X + 18 + 19$   
 $\mathcal{X} = X + 17 + 18$   
 $\mathcal{X} = X + 17 + 18 + 19$   
 $\mathcal{Y} = Y + 10$   
 $\mathcal{Y} = Y + 10 + 20$   
 $\mathcal{Y} = Y + 10 + 19$   
 $\mathcal{Y} = Y + 20$   
 $\mathcal{Y} = Y + 19$   
 $\mathcal{Y} = Y + 14$

$\mathcal{Y} = Y + 16$   
 $\mathcal{Y} = Y + 10 + 16$   
 $\mathcal{Y} = Y + 10 + 16 + 20$   
 $\mathcal{Y} = Y + 10 + 16 + 19$   
 $Z = Z + 17$   
 $\mathcal{Z} = Z + 18$   
 $\mathcal{Z}\mathcal{A} = ZA + dlig$   
 $\mathcal{P} = P + 10$   
 $\mathcal{P} = P + 14$   
 $\mathcal{P} = P + 10 + 14$   
 $\mathcal{R} = \mathcal{R} + 11$   
 $\mathcal{R} = \mathcal{R} + 02$

## SMALL CAPITALS

$\mathcal{A} = A + 10$   
 $\mathcal{A} = A + 11$   
 $\mathcal{A} = A + 06$   
 $\mathcal{A} = A + 12$   
 $\mathcal{A} = A + 13$   
 $\mathcal{A} = A + 14$   
 $\mathcal{A} = A + 12 + 14$   
 $\mathcal{A} = A + 10 + 14$   
 $\mathcal{A} = A + 15$   
 $\mathcal{A} = A + 16$   
 $\mathcal{A} = A + 11 + 16$

$A = A + 07$   
 $\mathcal{A} = A + 07 + 10$   
 $\mathcal{A} = A + 07 + 12$   
 $\mathcal{A} = A + 07 + 13$   
 $\mathcal{A} = A + 07 + 14$   
 $\mathcal{A} = A + 07 + 16$   
 $\mathcal{A} = A + 07 + 10 + 14$   
 $\mathcal{A} = A + 07 + 10 + 16$   
 $\mathcal{A} = A + 07 + 12 + 14$   
 $\mathcal{A} = A + 07 + 12 + 16$   
 $A = A + 08$   
 $\mathcal{A} = A + 08 + 12$   
 $\mathcal{A} = A + 08 + 14$   
 $\mathcal{A} = A + 08 + 12 + 14$   
 $\mathcal{A} = A + 08 + 16$   
 $\mathcal{A} = \mathcal{A} + 10$   
 $\mathcal{A} = \mathcal{A} + 14$   
 $\mathcal{A} = \mathcal{A} + 16$   
 $\mathcal{A} = \mathcal{A} + 10 + 14$   
 $\mathcal{B} = B + 10$   
 $\mathcal{B} = B + 16$   
 $\mathcal{B} = B + 10 + 16$   
 $\mathcal{C} = C + 17$   
 $\mathcal{C} = C + 18$   
 $\mathcal{C} = C + 17 + 18$

# RECIPES

$\mathcal{C} = c + 12$	$\mathcal{G} = g + 10$	$\mathcal{KA} = \text{KA} + \text{dlig}$
$\mathcal{C} = c + 10$	$\mathcal{G} = g + 10 + 16$	$\mathcal{KA} = \text{KA} + \text{dlig} + 10$
$\mathcal{C} = c + 10 + 17$	$\mathcal{H} = h + 10$	$\mathcal{L} = l + 10$
$\mathcal{C} = c + 10 + 18$	$\mathcal{H} = h + 10 + 14$	$\mathcal{L} = l + 17$
$\mathcal{D} = d + 10$	$\mathcal{H} = h + 10 + 15$	$\mathcal{L} = l + 18$
$\mathcal{D} = d + 16$	$\mathcal{H} = h + 10 + 14 + 20$	$\mathcal{L} = l + 10 + 18$
$\mathcal{D} = d + 10 + 16$	$\mathcal{H} = h + 10 + 15 + 20$	$\mathcal{L} = l + 17 + 18$
$\mathcal{D} = d + 11$	$\mathcal{I} = i + 10$	$\mathcal{L} = l + 07$
$\mathcal{E} = e + 10$	$\mathcal{J} = j + 10$	$\mathcal{L} = l + 07 + 17$
$\mathcal{E} = e + 17$	$\mathcal{J} = j + 10 + 16$	$\mathcal{L} = l + 07 + 18$
$\mathcal{E} = e + 18$	$\mathcal{K} = k + 10$	$\mathcal{L} = l + 07 + 17 + 18$
$\mathcal{E} = e + 06$	$\mathcal{K} = k + 17$	$\mathcal{L} = l + 07 + 10$
$\mathcal{E} = e + 07$	$\mathcal{K} = k + 10 + 17$	$\mathcal{L} = l + 07 + 10 + 17$
$\mathcal{E} = e + 07 + 17$	$\mathcal{K} = k + 18$	$\mathcal{L} = l + 07 + 10 + 18$
$\mathcal{E} = e + 07 + 18$	$\mathcal{K} = k + 17 + 18$	$\mathcal{L} = l + 07 + 10 + 17 + 18$
$\mathcal{E} = e + 07 + 10$	$\mathcal{K} = k + 20$	$\mathcal{LA} = \text{LA} + \text{dlig}$
$\mathcal{N} = n + 10$	$\mathcal{K} = k + 10 + 20$	$\mathcal{LA} = \text{LA} + \text{dlig} + 10$
$\mathcal{N} = n + 03$	$\mathcal{K} = k + 17 + 20$	$\mathcal{M} = m + 10$
$\mathcal{N} = n + 03 + 10$	$\mathcal{K} = k + 10 + 17 + 20$	$\mathcal{M} = m + 15$
$\mathcal{F} = f + 10$	$\mathcal{K} = k + 18 + 20$	$\mathcal{M} = m + 10 + 15$
$\mathcal{F} = f + 14$	$\mathcal{K} = k + 17 + 18 + 20$	$\mathcal{M} = m + 10 + 14$
$\mathcal{F} = f + 10 + 14$	$\mathcal{K} = k + 19$	$\mathcal{M} = m + 11$
$\mathcal{F} = f + 11$	$\mathcal{K} = k + 17 + 19$	$\mathcal{M} = m + 10 + 16$
$\mathcal{F} = f + 11 + 19$	$\mathcal{K} = k + 18 + 19$	$\mathcal{M} = m + 12$
$\mathcal{G} = g + 16$	$\mathcal{K} = k + 17 + 18 + 19$	$\mathcal{M} = m + 10 + 12$

# RECIPES

$$\mathcal{M} = M + 12 + 15$$

$$\mathcal{M} = M + 10 + 12 + 15$$

$$\mathcal{M} = M + 10 + 12 + 14$$

$$\mathcal{M} = M + 11 + 12$$

$$\mathcal{M} = M + 10 + 12 + 16$$

$$M = M + 07$$

$$m = M + 03$$

$$\mathcal{M} = M + 03 + 10$$

$$m = M + 03 + 18$$

$$\mathcal{M} = M + 03 + 10 + 17$$

$$\mathcal{N} = N + 10$$

$$\mathcal{N} = N + 10 + 14$$

$$\mathcal{N} = N + 10 + 14 + 20$$

$$\mathcal{N} = N + 11$$

$$\mathcal{N} = N + 19$$

$$\mathcal{N} = N + 20$$

$$\mathcal{N} = N + 18$$

$$\mathcal{N} = N + 10 + 17$$

$$\mathcal{N} = N + 03$$

$$\mathcal{N} = N + 03 + 10$$

$$\mathcal{N} = N + 03 + 18$$

$$\mathcal{N} = N + 03 + 10 + 18$$

$$\mathcal{O} = oo + dlig$$

$$\mathcal{O} = o + 12$$

$$\mathcal{O} = o + 19$$

$$\mathcal{E} = \mathcal{E} + 10$$

$$P = P + 10$$

$$\mathcal{P} = P + 10 + 14$$

$$Q = q + 02$$

$$\mathcal{Q} = q + 07$$

$$\mathcal{Q} = q + 07 + 17$$

$$\mathcal{Q} = q + 07 + 18$$

$$\mathcal{R} = R + 10$$

$$\mathcal{R} = R + 10 + 17$$

$$R = R + 17$$

$$\mathcal{R} = R + 18$$

$$\mathcal{R} = R + 17 + 18$$

$$RA = RA + dlig$$

$$\mathcal{RA} = RA + dlig + 10$$

$$S = s + 16$$

$$S = s + 16 + 19$$

$$\mathcal{S} = s + 10$$

$$\mathcal{S} = s + 07$$

$$\mathcal{S} = s + 07 + 16$$

$$\mathcal{B} = B + 14$$

$$\mathcal{B} = B + 16$$

$$\mathcal{B} = B + 07$$

$$\mathcal{B} = B + 07 + 14$$

$$\mathcal{B} = B + 07 + 16$$

$$\mathcal{T} = T + 11$$

$$\mathcal{T} = T + 11 + 19$$

$$\mathcal{T} = T + 11 + 20$$

$$\mathcal{T} = T + 10$$

$$\mathcal{T} = T + 11 + 13$$

$$\mathcal{T} = T + 11 + 14$$

$$\mathcal{T} = T + 11 + 14 + 19$$

$$\mathcal{TT} = TT + dlig$$

$$\mathcal{U} = U + 12$$

$$\mathcal{U} = U + 19$$

$$\mathcal{U} = U + 20$$

$$\mathcal{U} = U + 19 + 20$$

$$\mathcal{U} = U + 10$$

$$\mathcal{U} = U + 10 + 19 + 20$$

$$\mathcal{V} = v + 10$$

$$\mathcal{V} = v + 20$$

$$\mathcal{V} = v + 19$$

$$\mathcal{V} = v + 10 + 20$$

$$\mathcal{V} = v + 19 + 20$$

$$\mathcal{V} = v + 12$$

$$\mathcal{V} = v + 07$$

$$\mathcal{V} = v + 07 + 10$$

$$\mathcal{V} = v + 07 + 19$$

$$\mathcal{V} = v + 07 + 20$$

$$\mathcal{W} = w + 10$$

$$\mathcal{W} = w + 20$$



# RECIPES

$$W = w + 19$$

$$\mathcal{W} = w + 10 + 20$$

$$W^{\circ} = w + 19 + 20$$

$$W^{\circ} = w + 12$$

$$W = w + 07$$

$$\mathcal{W} = w + 07 + 10$$

$$W^{\circ} = w + 07 + 19$$

$$W^{\circ} = w + 07 + 20$$

$$\mathcal{X} = x + 10$$

$$X = x + 20$$

$$X = x + 14$$

$$\mathcal{X} = x + 10 + 20$$

$$\mathcal{X} = x + 10 + 14$$

$$X = x + 19$$

$$\mathcal{X} = x + 16$$

$$\mathcal{X} = x + 16 + 20$$

$$X = x + 14 + 20$$

$$\mathcal{X} = x + 10 + 15$$

$$\mathcal{X} = x + 10 + 15 + 20$$

$$X = x + 14 + 19$$

$$X = x + 17$$

$$\mathcal{X} = x + 10 + 17$$

$$X = x + 18$$

$$X = x + 18 + 19$$

$$X = x + 17 + 18$$

$$X = x + 17 + 18 + 19$$

$$Y = y + 10$$

$$\mathcal{Y} = y + 10 + 20$$

$$Y = y + 20$$

$$Y = y + 19$$

$$Y = y + 14$$

$$Y = y + 16$$

$$\mathcal{Y} = y + 10 + 16$$

$$\mathcal{Y} = y + 10 + 16 + 20$$

$$ZA = zA + dlig$$

$$Z = z + 17$$

$$Z = z + 18$$

$$P = p + 10$$

$$P = p + 14$$

$$P = p + 10 + 14$$

$$\mathcal{R} = \mathcal{R} + 11$$

$$\mathcal{R} = \mathcal{R} + 02$$

## lowercase

$$a = a + 18$$

$$a = a + 12$$

$$a = a + 01$$

$$æ = æ + 04$$

$$b = b + 19$$

$$b = b + 11$$

$$C = c + 17$$

$$C = c + 18$$

$$C = c + 20$$

$$ct = ct + dlig$$

$$ct = ct + dlig + 12$$

$$ct = ct + dlig + 18$$

$$d = d + 12$$

$$d = d + 11$$

$$e = e + 07$$

$$e = e + 07 + 17$$

$$e = e + 18$$

$$e = e + 19$$

$$e = e + 20$$

$$e = e + 04$$

$$e = e + 04 + 12$$

$$f = f + 14$$

$$f = f + 14 + 15$$

$$f = f + 16$$

$$f = f + 14 + 16$$

$$ff = ff + 14$$

$$ff = ff + 14 + 15$$

$$ff = ff + 16$$

$$ff = ff + 14 + 16$$

$$ff = ff + 14 + 15 + 16$$

$$fi = fi + 14$$

# RECIPES

$\mathfrak{fi} = fi + 14 + 15$	$\mathfrak{g} = \acute{g} + 15$	$\mathfrak{K} = k + 17 + 20$
$\mathfrak{fi} = fi + 16$	$\mathfrak{g} = \acute{g} + 16$	$\mathfrak{k} = k + 12$
$\mathfrak{fi} = fi + 14 + 16$	$\mathfrak{g} = \acute{g} + 02$	$\mathfrak{k} = k + 19$
$\mathfrak{fl} = fl + 14$	$\mathfrak{g} = \acute{g} + 02 + 14$	$\mathfrak{k} = k + 17 + 19$
$\mathfrak{fl} = fl + 14 + 15$	$\mathfrak{g} = \acute{g} + 02 + 15$	$\mathfrak{k} = k + 18$
$\mathfrak{fl} = fl + 16$	$\mathfrak{g} = \acute{g} + 02 + 16$	$\mathfrak{k} = k + 18 + 19$
$\mathfrak{fl} = fl + 14 + 16$	$\mathfrak{gi} = gi + dlig$	$\mathfrak{K} = k + 13$
$\mathfrak{fl} = fl + 18$	$\mathfrak{g} = \acute{g} + 01$	$\mathfrak{K} = k + 13 + 17$
$\mathfrak{fl} = fl + 17$	$\mathfrak{g} = \acute{g} + 01 + 13$	$\mathfrak{K} = k + 13 + 18$
$\mathfrak{ffi} = ffi + 14$	$\mathfrak{h} = h + 14$	$\mathfrak{l} = 1 + 17$
$\mathfrak{ffi} = ffi + 14 + 15$	$\mathfrak{h} = h + 17$	$\mathfrak{l} = 1 + 18$
$\mathfrak{ffi} = ffi + 16$	$\mathfrak{h} = h + 18$	$\mathfrak{l} = 1 + 17 + 18$
$\mathfrak{ffi} = ffi + 14 + 16$	$\mathfrak{h} = h + 17 + 18$	$\mathfrak{m} = m + 17$
$\mathfrak{ffi} = ffi + 14 + 15 + 16$	$\mathfrak{h} = h + 12$	$\mathfrak{m} = m + 18$
$\mathfrak{ffl} = ffl + 14$	$\mathfrak{h} = h + 19$	$\mathfrak{m} = m + 14$
$\mathfrak{ffl} = ffl + 14 + 15$	$\mathfrak{h} = h + 17 + 19$	$\mathfrak{m} = m + 17 + 18$
$\mathfrak{ffl} = ffl + 16$	$\mathfrak{h} = h + 18 + 19$	$\mathfrak{m} = m + 12$
$\mathfrak{ffl} = ffl + 14 + 16$	$\mathfrak{i} = i + 12$	$\mathfrak{n} = n + 14$
$\mathfrak{ffl} = ffl + 14 + 15 + 16$	$\mathfrak{it} = it + dlig$	$\mathfrak{n} = n + 17$
$\mathfrak{ffl} = ffl + 18$	$\mathfrak{j} = j + 14$	$\mathfrak{n} = n + 18$
$\mathfrak{ffl} = ffl + 17$	$\mathfrak{j} = j + 15$	$\mathfrak{n} = n + 17 + 18$
$\mathfrak{g} = \acute{g} + 20$	$\mathfrak{j} = j + 16$	$\mathfrak{n} = n + 12$
$\mathfrak{g} = \acute{g} + 19 + 20$	$\mathfrak{j} = j + 14 + 16$	$\mathfrak{O} = oo + dlig$
$\mathfrak{g} = \acute{g} + 19$	$\mathfrak{K} = k + 17$	$\mathfrak{O} = o + 12$
$\mathfrak{g} = \acute{g} + 14$	$\mathfrak{K} = k + 20$	$\mathfrak{O} = o + 19$

# RECIPES

$$gf = of + dlig$$

$$\text{œ} = \text{œ} + 04$$

$$p = p + 14$$

$$p = p + 16$$

$$p = p + 13$$

$$q = q + 17$$

$$q = q + 18$$

$$q = q + 17 + 18$$

$$q = q + 13$$

$$r = r + 19$$

$$r = r + 20$$

$$r = r + 13$$

$$ri = ri + dlig$$

$$r = r + 19 + 20$$

$$r = r + 17$$

$$r = r + 18$$

$$s = s + 14$$

$$s = s + 13$$

$$s = s + 20$$

$$s = s + 16$$

$$s = s + 07$$

$$s = s + 07 + 14$$

$$s = s + 07 + 15$$

$$s = s + 07 + 16$$

$$s = s + 07 + 14 + 16$$

$$st = st + dlig$$

$$st = st + dlig + 12$$

$$st = st + dlig + 18$$

$$st = st + dlig + 14$$

$$\beta = \beta + 16$$

$$\beta = \beta + 14 + 16$$

$$\beta = \beta + 14$$

$$t = t + 17$$

$$t = t + 18$$

$$t = t + 17 + 18$$

$$t = t + 12 + 17$$

$$t = t + 12 + 18$$

$$t = t + 12$$

$$t = t + 13$$

$$u = u + 12$$

$$v = v + 12$$

$$v = v + 19$$

$$v = v + 20$$

$$w = w + 12$$

$$w = w + 19$$

$$w = w + 20$$

$$x = x + 20$$

$$x = x + 14$$

$$x = x + 14 + 20$$

$$x = x + 17$$

$$x = x + 19$$

$$x = x + 17 + 19$$

$$x = x + 18$$

$$x = x + 18 + 19$$

$$y = y + 14$$

$$y = y + 16$$

$$y = y + 11$$

$$y = y + 11 + 16$$

$$y = y + 12$$

$$y = y + 19$$

$$y = y + 20$$

$$y = y + 01$$

$$z = z + 17$$

$$z = z + 18$$

$$z = z + 12$$

$$b = b + 11$$

$$b = b + 14$$

$$b = b + 16$$

$$b = b + 13$$

$$b = b + 19$$



[marksimonson.com](http://marksimonson.com)